

Combicut Tile Cutting Machine



CUTTING

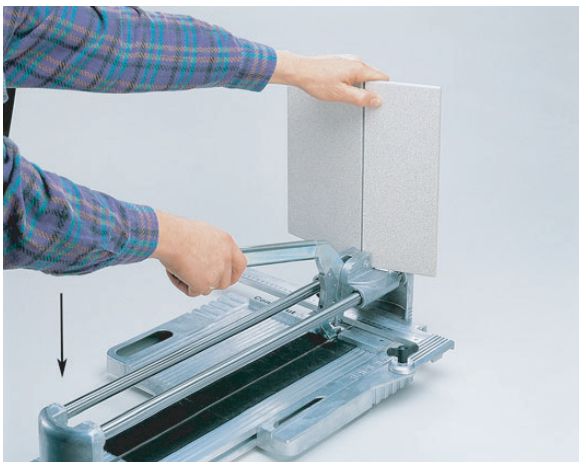
Place the tile and adjust the angle in the required position. Scribe the tile consistently.
A professional tip: To cut tile, scribe only once. Repeated scribing ruins your cutting wheel and the tile.



BREAKING

Place the breaker always in the front and break the tile with an short and adequate pressure on the handle.

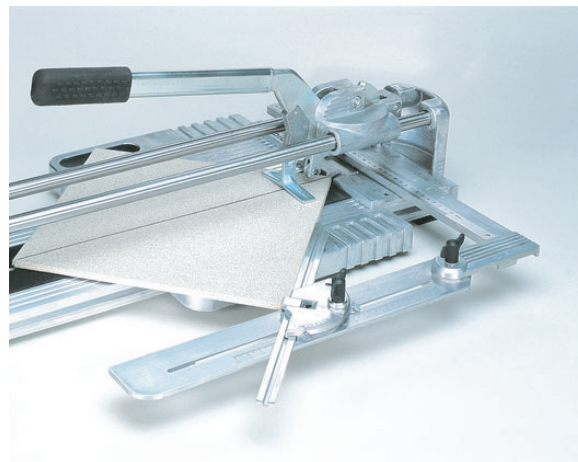
If you don't succeed in the first run, check if the glaze has been scribed well and continuous. Not correctly scribed tiles are impossible to break or the breakage doesn't follow along the scribed line.



BREAKING OF THICK SLABS

For thick slabs or tiles with knobbed surface you will achieve considerably easier results with the breaker on the top.

Place the tile in the device in the way that you can see the glazed side and break the tile with a short and adequate pressure on the handle.



ADJUSTING

Profit of the adjustable stop angle (with scale in millimetre and inch) to adjust the required measurement.

For diagonal cuts with the standard angle place the tile in the notch at the stop and adjust the angle on 45°.

If you work with the special diagonal angle do not place the tile in the notch. A detailed description about the application please find in the pdf-file "Application Diagonal Angle".

Please check regularly the true running of the tungsten carbide cutting wheel. In case of abrasion change the tungsten carbide cutting wheel and the spindle. The tungsten carbide cutting wheel, the spindle as well as every single part are available as original Kaufmann replacement parts and guarantee an optimal functionality.

We wish you success and fun for your work. Please contact us if you have any questions.